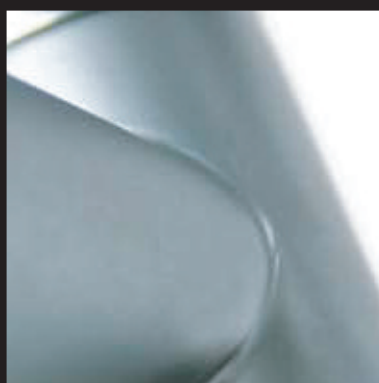
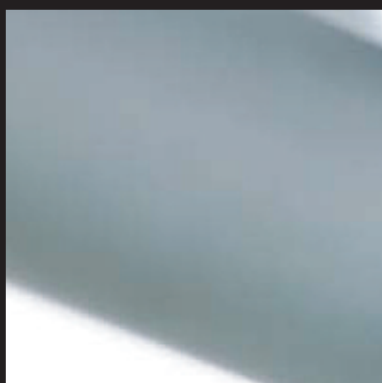
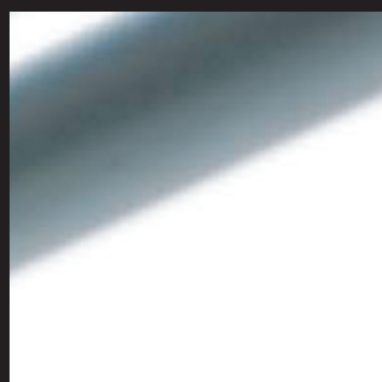
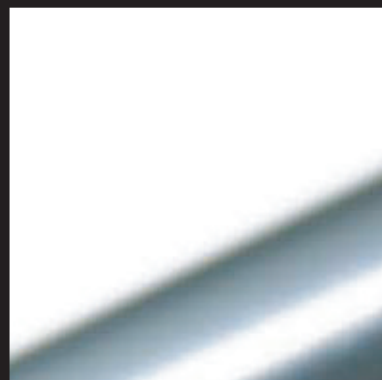


# CEILING AND WALL FITTINGS



# SALSA SHORT ARM

GX53 | 9W



MATERIAL: METAL AND ZINC ALLOY		COLOURS	
CLASS 1			
		ON/OFF	MATT CHROME

DESCRIPTION

ORDER CODE

SOURCE



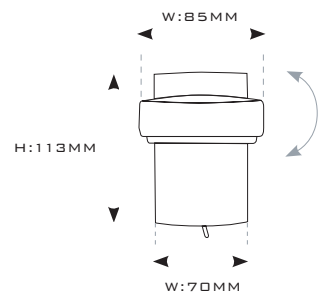
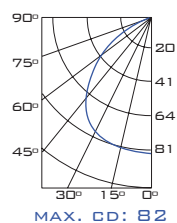
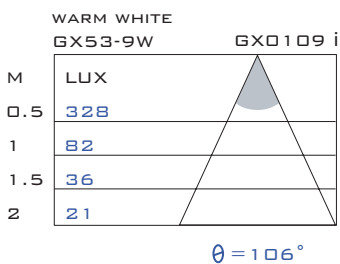
WALL LAMP  
SHORT ARM  
WITH PIN SWITCH

512525



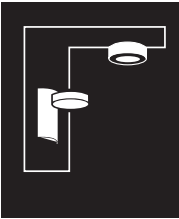
GX53  
9W  
220~240V  
50/60-Hz

## LIGHTING DISTRIBUTION



# SALSA FLEXIBLE ARM

GX53 | 9W



MATERIAL: METAL AND ZINC ALLOY		COLOURS	
CLASS 1	0.1m		
		ON/OFF	MATT CHROME

DESCRIPTION

ORDER CODE

SOURCE



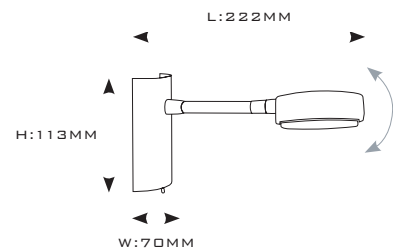
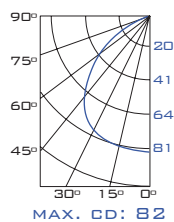
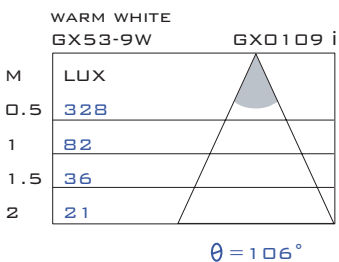
WALL LAMP  
FLEXIBLE ARM  
WITH PIN SWITCH

512549



GX53  
9W  
220~240V  
50/60-Hz

## LIGHTING DISTRIBUTION



# SALSA ARTICULATED ARM

GX53 | 9W



MATERIAL: METAL AND ZINC ALLOY		COLOURS	
CLASS 1	0.1m		
		ON/OFF	MATT CHROME

DESCRIPTION

ORDER CODE

SOURCE



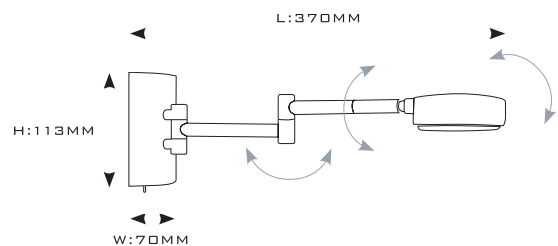
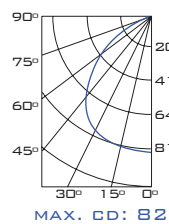
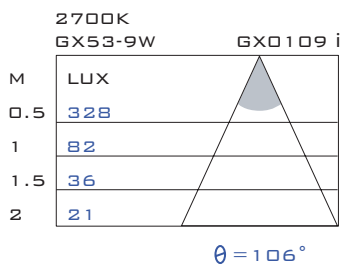
WALL LAMP  
ARTICULATED ARM  
WITH PIN SWITCH

512563



GX53  
9W  
220~240V  
50/60-Hz

## LIGHTING DISTRIBUTION



# OYA ARTICULATED 2 ARMS

GX53 | 2 X 9W



MATERIAL: METAL AND ZINC ALLOY		COLOURS	
CLASS 1			
		ON/OFF	MATT CHROME

DESCRIPTION	ORDER CODE	SOURCE
-------------	------------	--------



WALL LAMP  
ARTICULATED 2 ARMS  
WITH 2 PIN SWITCHES

512369



GX53  
2 x 9W  
220~240V  
50/60-Hz

## LIGHTING DISTRIBUTION

